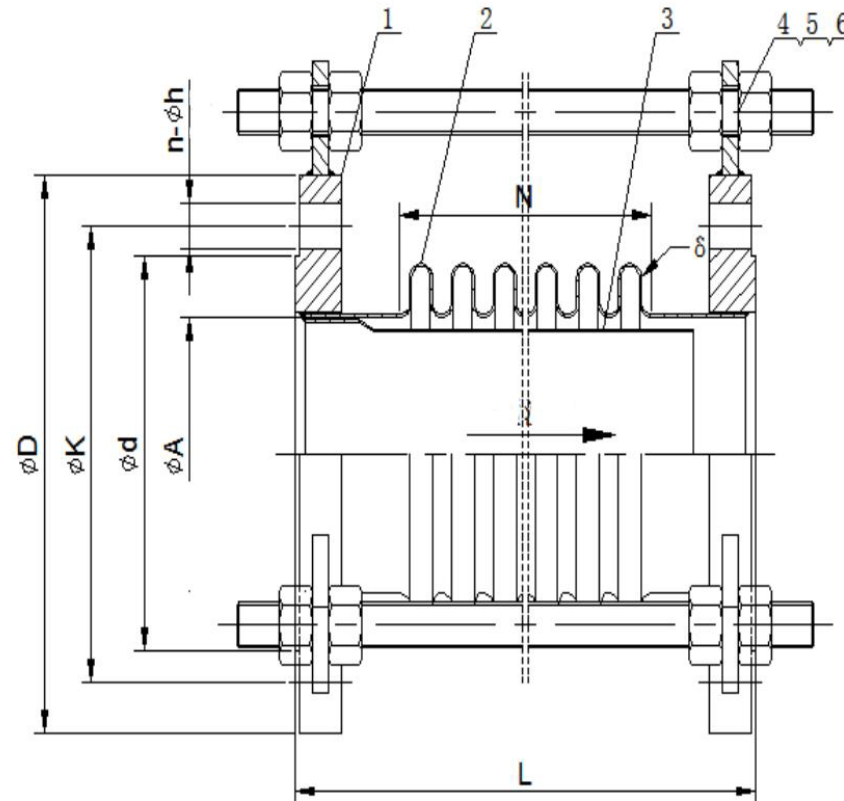


SIZE		BELLOW				Flange (ANSI Class 150 RF)				Nos
NPS	DN	L	A	N	$\delta$	D	K	d	n- $\phi$ h	
2"	50	200	60	10	0.6	150	120.7	92.1	4- $\phi$ 18	3
3"	80	250	89	10	0.6	190	152.4	127.0	4- $\phi$ 18	3
4"	100	300	114	12	1.0	230	190.5	157.2	8- $\phi$ 18	3
5"	125	300	140	12	1.0	255	215.9	185.7	8- $\phi$ 22	2
6"	150	300	165	10	1.0	280	214.3	215.9	8- $\phi$ 22	2
8"	200	300	219	6	1.2	345	298.5	269.9	8- $\phi$ 22	2

6	Screw Nut	Q235	12
5	Rod	20#	3
4	Lug	Q235	6
3	Draft Tube	SUS316L	1
2	Bellow	SUS316L	1
1	Flange	SUS316L	2
<b>No.</b>	<b>Part name</b>	<b>Material</b>	<b>Nos.</b>



Remarks:

- (1) Design/test acc. To: GB/T12777-2019
- (2) Pressure designed: 1.6MPa
- (3) Pressure test: 5min under 2.4MPa pressure, no leakage
- (4) Air tightness test: 10min under 1.6MPa pressure, no air leakage



**DIE ERSTE INDUSTRY CO., LTD,**  
TAICHUNG, TAIWAN

SHEET 1 OF 1		DRAWN BY: MICHELLE 2021/7/26	REVIEW BY:	APPROVAL:	UNIT: mm	<b>DO NOT SCALE DRAWING</b>	TITLE: I201116TB Metal Expansion Joint Class 150	REV <b>2.0</b>
REMARK					PROJECT: 	DWG. NO.		

PROPRIETARY AND CONFIDENTIAL

THE INFORMATION CONTAINED IN THIS DRAWING IS THE SOLE PROPERTY OF «DIE ERSTE INDUSTRY CO., LTD.». ANY REPRODUCTION IN PART OR AS A WHOLE WITHOUT THE WRITTEN PERMISSION OF «DIE ERSTE INDUSTRY CO., LTD.» IS PROHIBITED.